



Participant Worksheet: Trust Team

Directions: In each scene Alex comes across either a friend, a trusted adult, or a regular adult. Your task is to determine who is who!

1. First, **read** the scenes below.
2. Second, familiarize yourself with the people in Alex’s life listed on page 2. Is each person a trusted adult, regular adult, or friend? **Underline clues** in each scene that may help you answer this question.
3. Next, **mark your answers** next to each person’s picture on page 2.
4. Lastly, **answer any discussion questions** on page 2.

1 **Scene 1:** Alex wakes up with a sore throat. He tells his mom he does not feel well. His mom listens carefully and tells him she will take care of him. She gives him medicine and follows the directions on the bottle. She tells Alex that if he does not feel better, she will call the doctor to get more help. Alex feels safe and cared for with his mom.

2 **Scene 2:** Alex is playing outside at school with Max when he suddenly feels dizzy and sits down. Max notices that Alex looks pale and sweaty. Max stays with him and asks if he is okay. Max runs to get a teacher for help. He comes back and stays with Alex until help arrives.

3 **Scene 3:** Mr. Smith just moved in the house next door to Alex. Alex has only talked to him once. One day Alex was playing outside and tripped and scraped his knee on the sidewalk. Mr. Smith saw the whole thing and ran to Alex and asked if he was okay. Alex said he was hurt and wanted his mom to help him. Mr. Smith goes to get Alex’s mom right away.

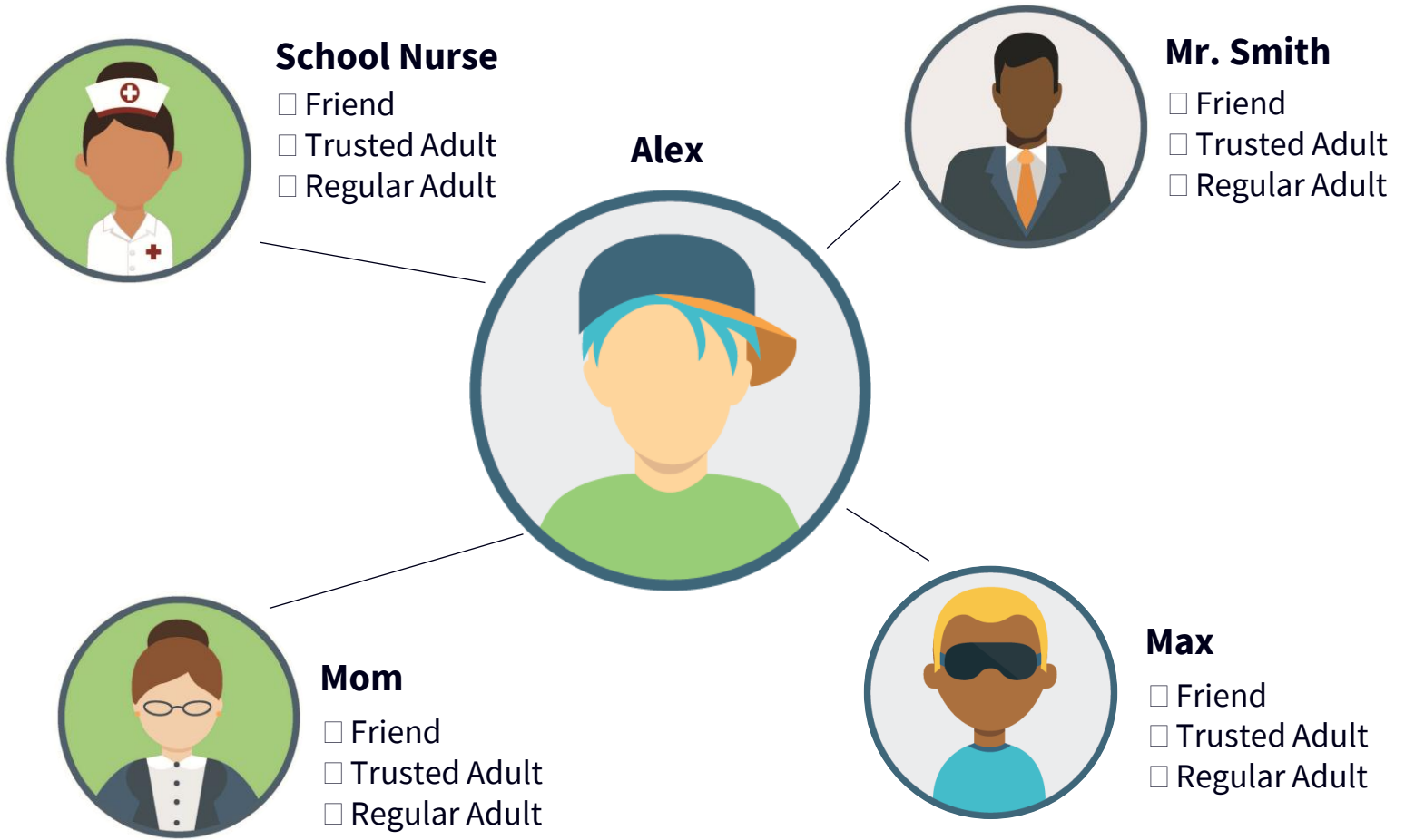
4 **Scene 4:** Alex goes to school but must take medicine at certain times throughout the day. The school nurse talks to Alex, listens to his concerns about his illness and the medicine, and answers his questions. The nurse takes care of him by helping Alex with his medicine. Alex feels comfortable going to her for help if he has a problem.

Did you know?

Pharmacists are medication experts and community helpers. They care for people in many ways, including teaching people how to take medicine safely. After you complete the worksheet, think about this question: **What similar traits exist between trusted adults and pharmacists?**



Participant Worksheet: **Trust Team, continued**



Discussion Questions

1 Think about the people above you marked as a **“trusted adult”**. Now, review the clues you underlined for these people. What similarities exist? What traits may help distinguish trusted adults from regular adults?

2 **Now that we understand traits that describe trusted adults, who are the trusted adults in your life?** Think about trusted adults in places like home, school, church, sports teams, community clubs, or your neighborhood. List the names of your trusted adults below. Ask a parent or guardian to approve your list of trusted adults.
